



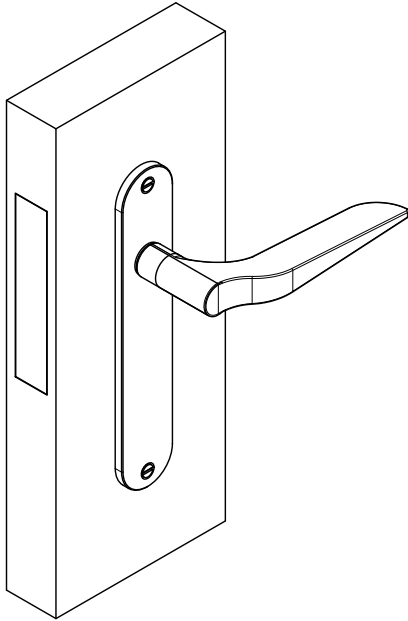
PALAIS HANDLE ESCUTCHEON

STUDIO HENRY WILSON

PALAIS ESCUTCHEON VARIATIONS

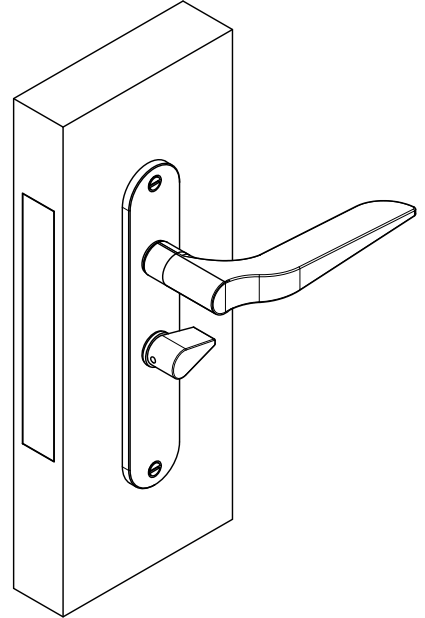
PASSAGE WAY

Details on page 2 & 3



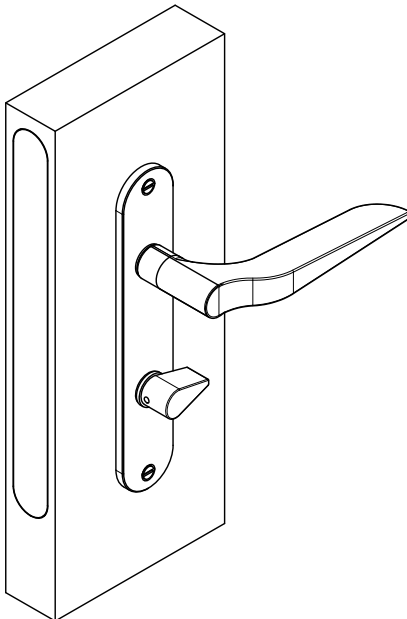
STANDARD PRIVACY

Details on page 4 & 5



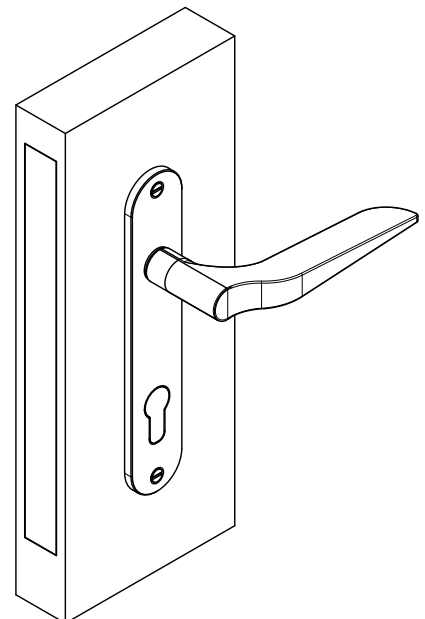
MAGNETIC PRIVACY

Details on page 6 & 7



KEY WAY

Details on page 8 & 9



PASSAGE WAY

"PILL" SHAPE ROSE/ESCUTCHEON



"CIRCLE" SHAPE ROSE/ESCUTCHEON



The Passageway variation suits doors with standard depth door jams. This variation is suited for internal doors where locking is not required.

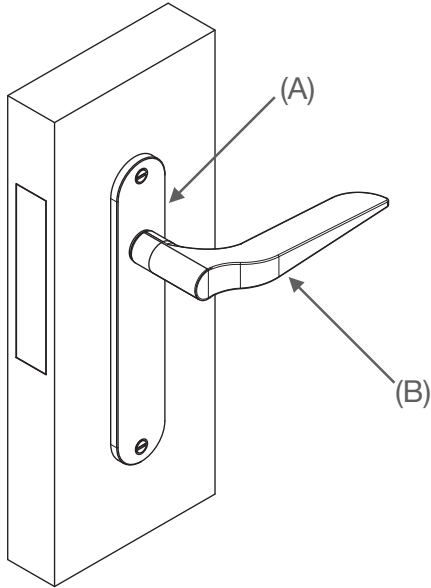
The rose/escutcheon provides matches other variations to form uniform design language across all doors.

The rose/escutcheon is designed to fit a Jacksons JM60 lock body. They are based here in Australia and make beautiful inexpensive brass locks.

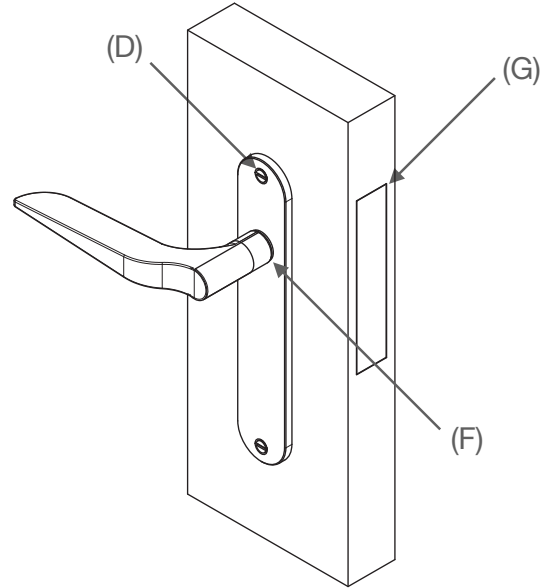
We strongly recommended using a double sprung lock for the brass hardware, to prevent the handles from sagging over time due to the weight of the brass.

PASSAGE WAY

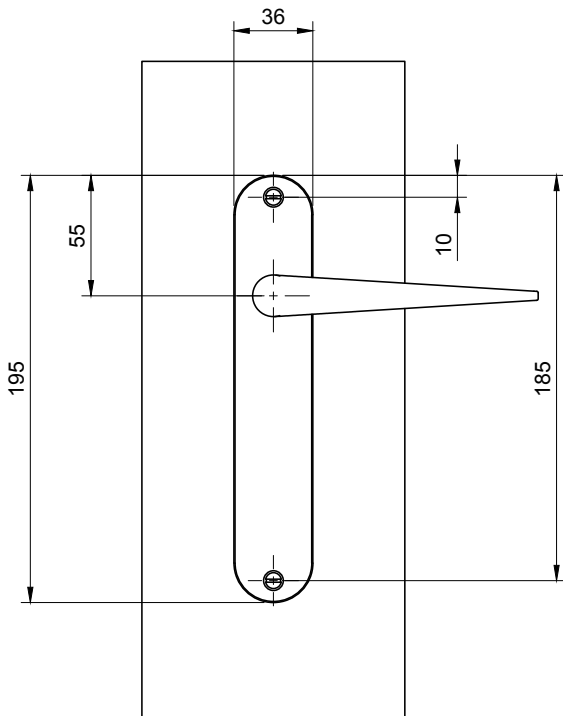
SIDE A



SIDE B



DIMENSIONS



SUPPLIED PARTS:

- (A) 2X PASSAGE WAY ROSE/ESCUTCHEON
- (B) 2X PALAIS HANDLE (LEFT & RIGHT)
- (C) 1X PALAIS SPINDLE (NOT SHOWN)
- (D) 4X CSK ROSE/ESCUTCHEON FIXINGS
- (E) GRUB/SET SCREWS (NOT SHOWN)
- (F) 2X NYLON BUSHING
- (G) JACKSONS JM60 LOCK BODY

STANDARD PRIVACY



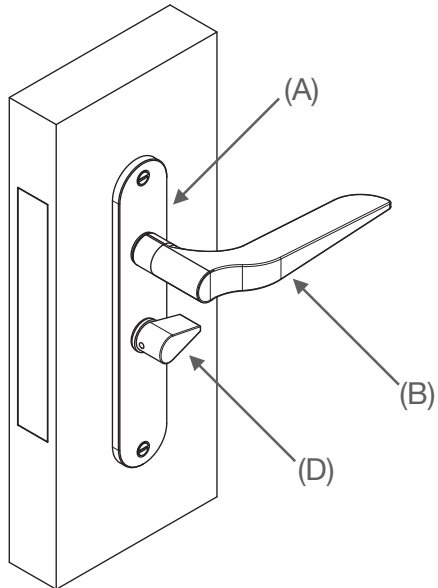
The standard privacy variation suits doors with standard depth door jams. This variation is suited for internal doors where locking is required without the need for a key. This variation provides provisions for a snib and release for operating the lock mechanism.

The rose/escutcheon is designed to fit a Jacksons JM160 lock body. They are based here in Australia and make beautiful inexpensive brass locks.

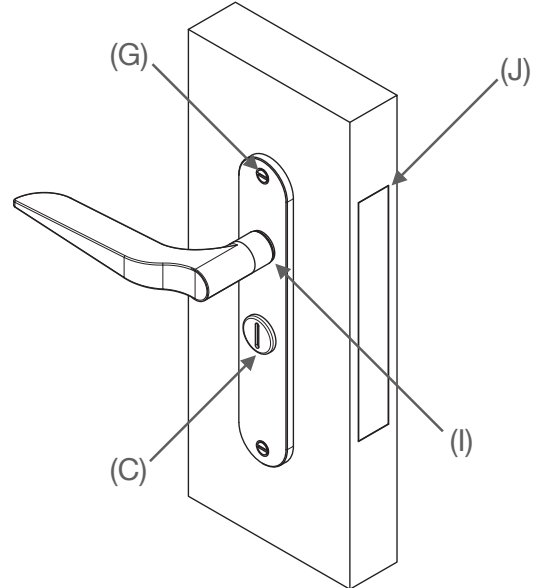
We strongly recommended using a double sprung lock for the brass hardware, to prevent the handles from sagging over time due to the weight of the brass.

STANDARD PRIVACY

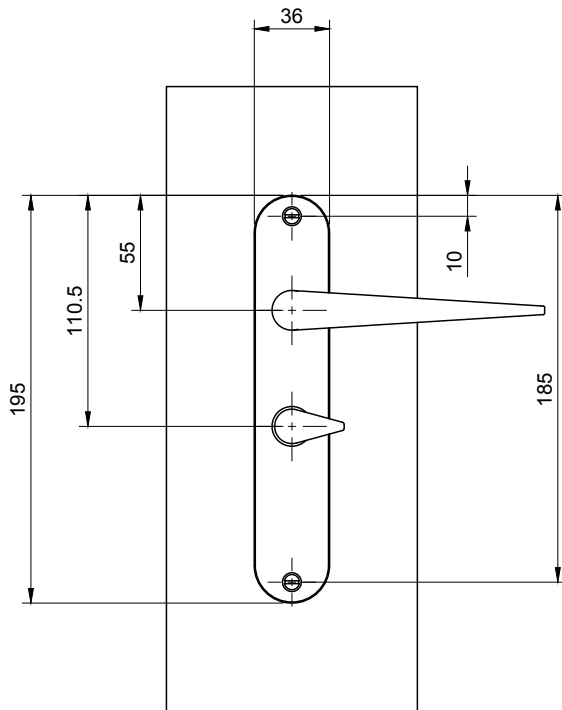
SIDE A



SIDE B



DIMENSIONS



SUPPLIED PARTS:

- (A) 2X STANDARD PRIVACY ROSE/ESCUTCHEON
- (B) 2X PALAIS HANDLE (LEFT & RIGHT)
- (C) 1X PRIVACY SNIB
- (D) 1X PRIVACY RELEASE
- (E) 1X PRIVACY SPINDLE (NOT SHOWN)
- (F) 1X PALAIS SPINDLE (NOT SHOWN)
- (G) 4X CSK ROSE/ESCUTCHEON FIXINGS
- (H) GRUB/SET SCREWS (NOT SHOWN)
- (I) 4X NYLON BUSHING
- (J) JACKSONS JM160 LOCK BODY

MAGNETIC PRIVACY



The Magnetic privacy variation suits doors with deep door jams. This variation is suited for internal doors where locking is required without the need for a key.

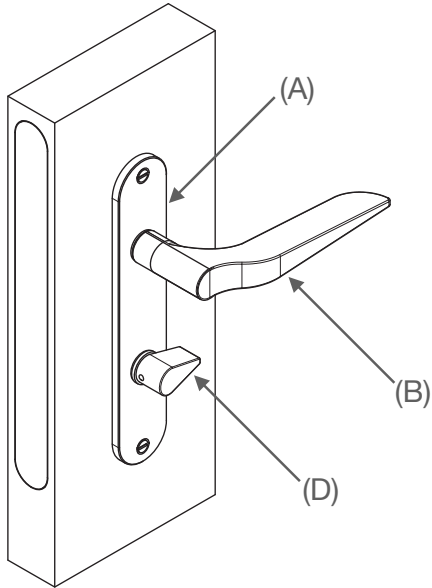
This variation provides provisions for a snib and release for operating the lock mechanism.

The rose/escutcheon is designed to fit a Bonaiti BL062 Lock Body.

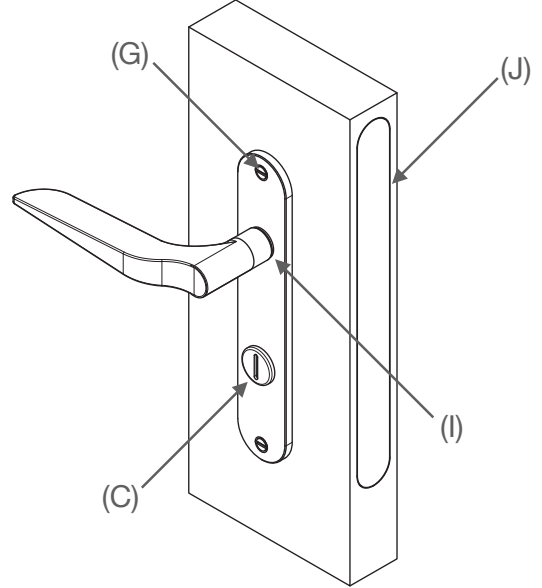
We strongly recommended using a double sprung lock for the brass hardware, to prevent the handles from sagging over time due to the weight of the brass.

MAGNETIC PRIVACY

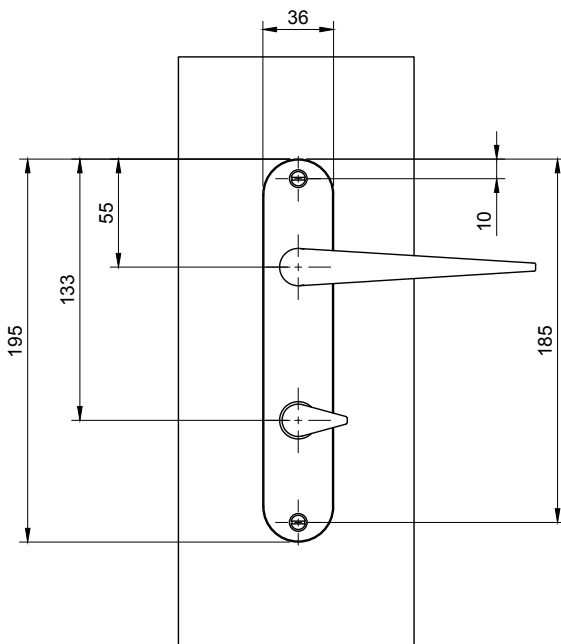
SIDE A



SIDE B



DIMENSIONS



SUPPLIED PARTS:

- (A) 2X MAGNETIC PRIVACY ROSE/ESCUTCHEON
- (B) 2X PALAIS HANDLE (LEFT & RIGHT)
- (C) 1X PRIVACY SNIB
- (D) 1X PRIVACY RELEASE
- (E) 1X PRIVACY SPINDLE (NOT SHOWN)
- (F) 1X PALAIS SPINDLE (NOT SHOWN)
- (G) 4X CSK ROSE/ESCUTCHEON FIXINGS
- (H) GRUB/SET SCREWS (NOT SHOWN)
- (I) 4X NYLON BUSHING
- (J) BONAITI BL062 LOCK BODY

KEY WAY



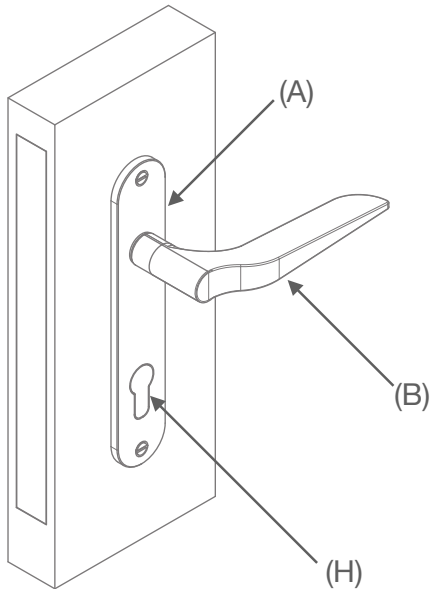
The Keyway variation suits doors with standard depth door jams. This variation is suited for external doors where further security is required with the use of a key. This variation provides provisions for a euro cylinder key barrel.

The rose/escutcheon is designed to fit a Jacksons JMCL60 lock body. They are based here in Australia and make beautiful inexpensive brass locks.

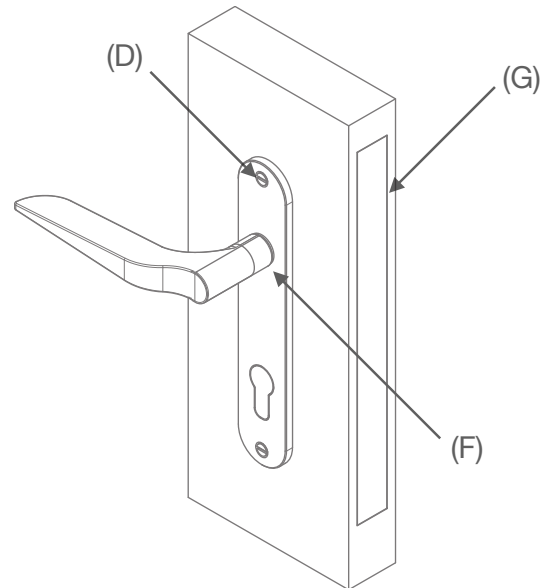
We strongly recommended using a double sprung lock for the brass hardware, to prevent the handles from sagging over time due to the weight of the brass.

KEY WAY

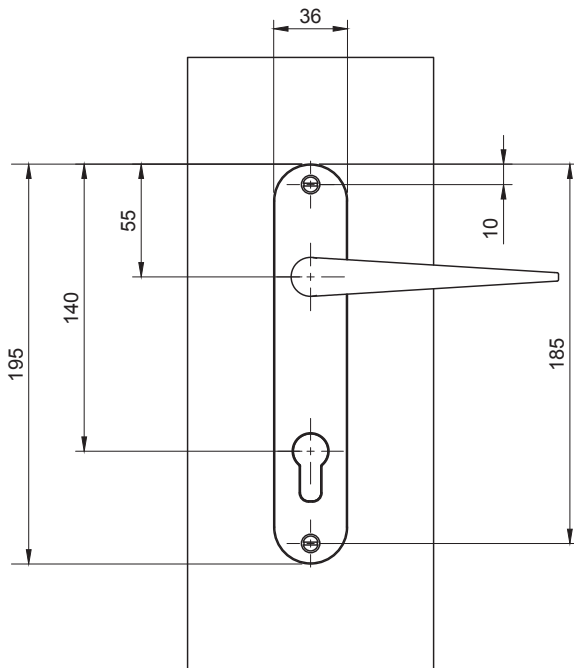
SIDE A



SIDE B



DIMENSIONS



SUPPLIED PARTS:

- (A) 2X KEY WAY ROSE/ESCUTCHEON
- (B) 2X PALAIS HANDLE (LEFT & RIGHT)
- (C) 1X PALAIS SPINDLE (NOT SHOWN)
- (D) 4X CSK ROSE/ESCUTCHEON FIXINGS
- (E) GRUB/SET SCREWS (NOT SHOWN)
- (F) 2X NYLON BUSHING
- (G) JACKSONS JMCL60 LOCK BODY

NOT SUPPLIED:

- (H) EURO CYLINDER

(THIS CAN BE PURCHASED FROM KEELER HARDWARE BASED ON YOUR DOOR THICKNESS AND FINISH)

PALAIS HANDLE VARIATIONS
AVAILABLE IN



BRASS



BRONZE



BLACKENED



ALUMINIUM

PALAIS HANDLE ESCUTCHEON

**IF YOU REQUIRED ANY ASSISTANCE, PLEASE CONTACT:
STUDIO@STUDIOHENRYWILSON.COM**