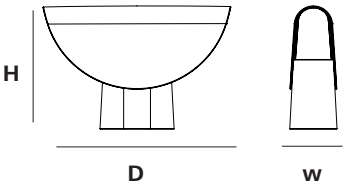


FOLD LIGHT



OVERALL DIMENSIONS

H 230MM x D 90MM x W 350MM  
H 9.06IN x D 3.54IN x W 13.78IN

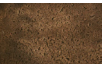


MATERIALS

I. METAL



Brass



Blackened



Aluminium

WEIGHT

Brass  
(5,500G / 194oz)

Blackened  
(5,000G / 176.4oz)

Aluminium  
(2,500G / 88.2oz)

PACKAGING

Recycled Cardboard  
H 145MM x L 440MM x W 400MM

CLEANING INSTRUCTIONS

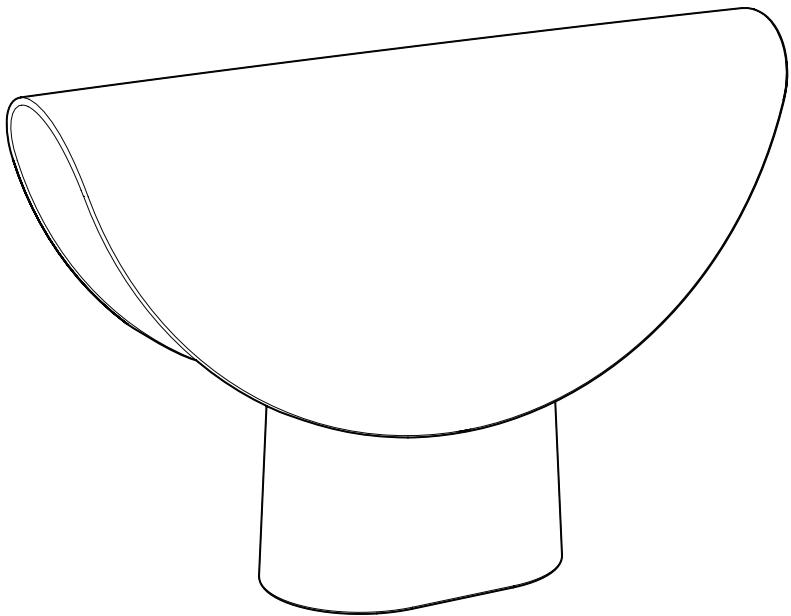
Before cleaning, lighting fixtures must be turned off and unplugged from mains electricity. Whilst cleaning please take care and use the gloves provided.

I. METAL

The metal used for our range oxidise with age and environment, both of which contribute to the evolution of a natural patina. If you favour the original bright finish of your pieces, this is easily restored by use of polishing solution - we recommend Braso or Silvo depending on the metal in question - applied with a soft, clean cloth.

Because each object is cast in small batches, slight variations will occur from one individual piece to another. Production marks may include slight pour ripples or surface pitting, which imprint every item with a unique character.

FOLD LIGHT



PRODUCT SPECIFICATIONS

AU / UK / EU		US / JPN		
LIGHTBULB TYPE		LIGHTBULB TYPE	HS CODE LAMPS / LIGHT FITTINGS	
9W LED max (supplied)		9W LED max (not supplied)	9405.40.8440	
FITTING DESCRIPTION		FITTING DESCRIPTION	HS CODE CORD SETS / POWER SUPPLY	
Bayonet Ø22MM (B22)		Edison Ø26MM (E22)	ELBZ.E465216	
SUGGESTED LUMEN RATING		SUGGESTED LUMEN RATING	LISTED PARTS *	
250LM		250LM	UL Lamp Holder	E3810
WATTAGE		WATTAGE	UL Cord	ELBZ . E465216
3.3w Equiv 25w Incandescent		3.3w Equiv 25w Incandescent	Canda	ELBZ . E465216
KELVIN RATING		KELVIN RATING		
2700k Warm White		2700k-3000k Warm White		
VOLTAGE		VOLTAGE		
230-240v / 50-60Hz		110-120v / 60Hz AC		
DIMMABILITY		DIMMABILITY		
No		Bulb dependant		
IF THE SUPPLIED FLEXIBLE CORD IS DAMAGED, REPLACE WITH 2 CORE SHEATHED TYPE ONLY.		IF THE SUPPLIED CORD IS DAMAGED, REPLACE WITH 2 CORE SHEATHED TYPE ONLY. HARDWIRED LAMPS MUST BE INSTALED BY A PROFESSIONAL.		