



## CONICAL WALL LIGHT

Technical specifications



**DOWNLIGHT ORIENTATION**



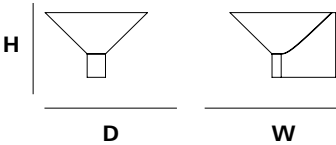
**UPLIGHT ORIENTATION**

CONICAL WALL LIGHT



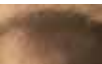
OVERALL DIMENSIONS

H 120MM x D 196MM x W 190MM  
H 4.72IN x D 7.72IN x W 7.48IN



MATERIALS

I. METAL



Bronze



Blackened



Stainless Steel

WEIGHT

Bronze / Blackened  
(2,500G / 88.2oz)

Stainless Steel  
(2,500G / 88.2oz)

PACKAGING

Recycled Cardboard  
H 125MM x L 200MM x W 200MM

CLEANING INSTRUCTIONS

Before cleaning, lighting fixtures must be turned off and unplugged from mains electricity. Whilst cleaning please take care and use the gloves provided.

I. METAL

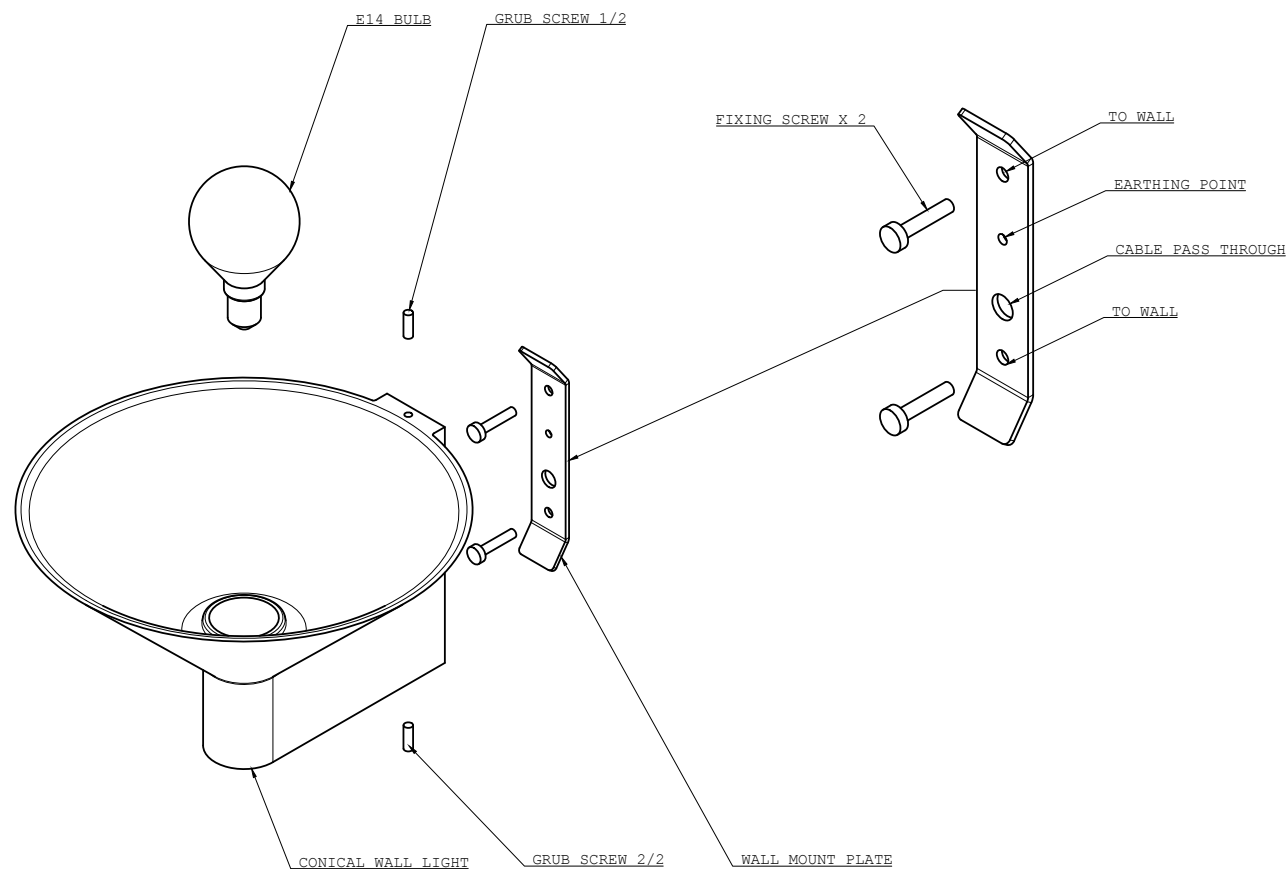
The metal used for our range oxidise with age and environment, both of which contribute to the evolution of a natural patina. If you favour the original bright finish of your pieces, this is easily restored by use of polishing solution - we recommend Braso or Silvo depending on the metal in question - applied with a soft, clean cloth.

Because each object is cast in small batches, slight variations will occur from one individual piece to another. Production marks may include slight pour ripples or surface pitting, which imprint every item with a unique character.

UPDATED

December 16, 2025

CONICAL WALL LIGHT



PRODUCT SPECIFICATIONS

AU / UK / EU

LIGHTBULB TYPE  
9W LED max (supplied)

FITTING DESCRIPTION  
Edison Ø14MM (E14)

SUGGESTED LUMEN RATING  
250LM

WATTAGE  
3.3w Equiv 25w Incandescent

KELVIN RATING  
2700k Warm White

VOLTAGE  
220-240v / 50-60Hz

DIMMABILITY  
Bulb dependant

IF THE SUPPLIED FLEXIBLE CORD IS  
DAMAGED, REPLACE WITH 2 CORE  
SHEATHED TYPE ONLY.

US / JPN

LIGHTBULB TYPE  
9W LED max (not supplied)

FITTING DESCRIPTION  
Edison Ø12MM (E12)

SUGGESTED LUMEN RATING  
250LM

WATTAGE  
3.3w Equiv 25w Incandescent

KELVIN RATING  
2700k-3000k Warm White

VOLTAGE  
110-120v / 60Hz AC

DIMMABILITY  
Bulb dependant

IF THE SUPPLIED CORD IS DAMAGED,  
REPLACE WITH 2 CORE SHEATHED TYPE  
ONLY. HARDWIRED LAMPS MUST BE  
INSTALED BY A PROFESSIONAL.

HS CODE LAMPS / LIGHT FITTINGS  
9405.40.8440

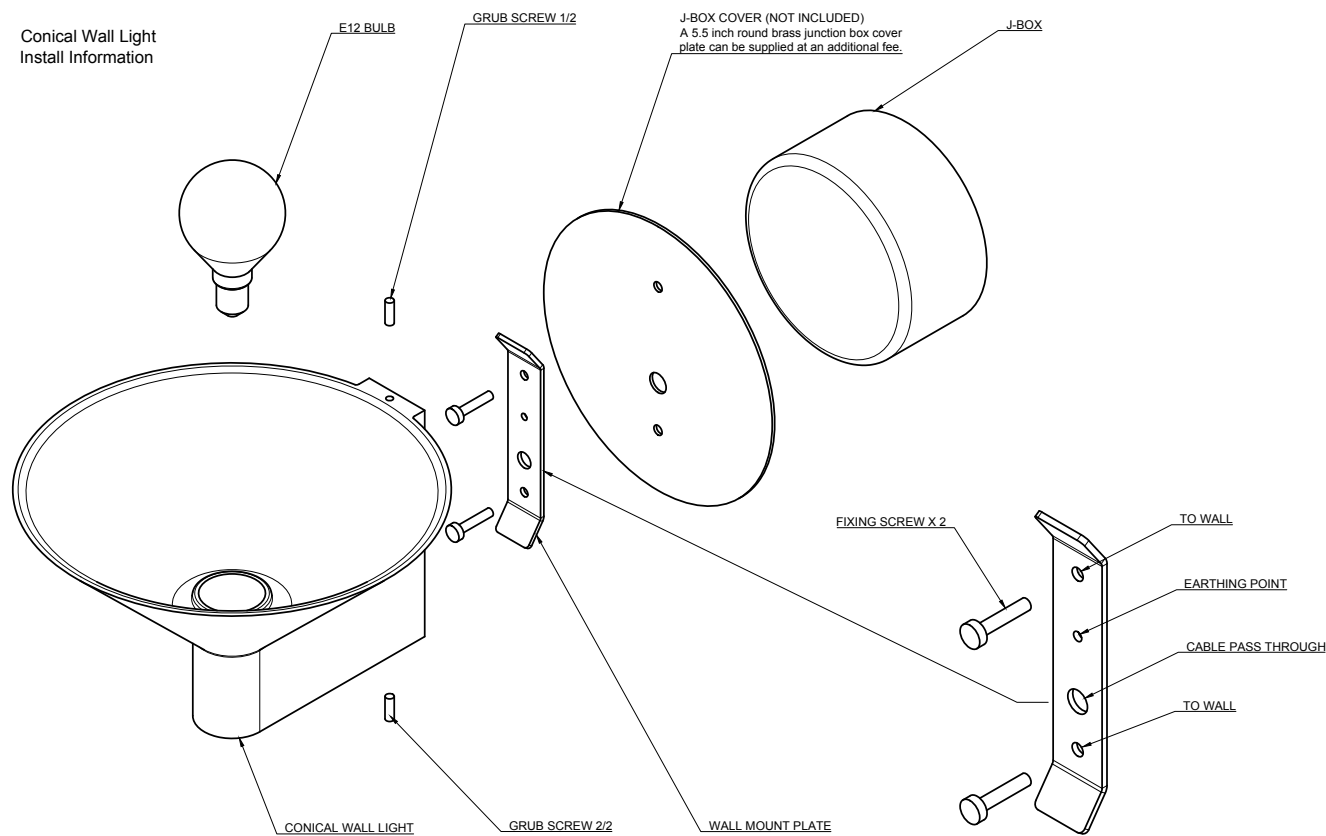
HS CODE CORD SETS / POWER SUPPLY  
ELBZ.E465216

LISTED PARTS \*  
UL Lamp Holder E3810

UL Cord ELBZ . E465216

Canda ELBZ . E465216

CONICAL WALL LIGHT with J-BOX Cover



PRODUCT SPECIFICATIONS

AU / UK / EU

LIGHTBULB TYPE  
9W LED max (supplied)

FITTING DESCRIPTION  
Edison Ø14MM (E14)

SUGGESTED LUMEN RATING  
250LM

WATTAGE  
3.3w Equiv 25w Incandescent

KELVIN RATING  
2700k Warm White

VOLTAGE  
220-240v / 50-60Hz

DIMMABILITY  
Bulb dependant

IF THE SUPPLIED FLEXIBLE CORD IS  
DAMAGED, REPLACE WITH 2 CORE  
SHEATHED TYPE ONLY.

US / JPN

LIGHTBULB TYPE  
9W LED max (not supplied)

FITTING DESCRIPTION  
Edison Ø12MM (E12)

SUGGESTED LUMEN RATING  
250LM

WATTAGE  
3.3w Equiv 25w Incandescent

KELVIN RATING  
2700k-3000k Warm White

VOLTAGE  
110-120v / 60Hz AC

DIMMABILITY  
Bulb dependant

IF THE SUPPLIED CORD IS DAMAGED,  
REPLACE WITH 2 CORE SHEATHED TYPE  
ONLY. HARDWIRED LAMPS MUST BE  
INSTALED BY A PROFESSIONAL.

HS CODE LAMPS / LIGHT FITTINGS  
9405.40.8440

HS CODE CORD SETS / POWER SUPPLY  
ELBZ.E465216

LISTED PARTS \*  
UL Lamp Holder E3810

UL Cord ELBZ . E465216

Canda ELBZ . E465216

CONICAL WALL LIGHT with J-BOX

